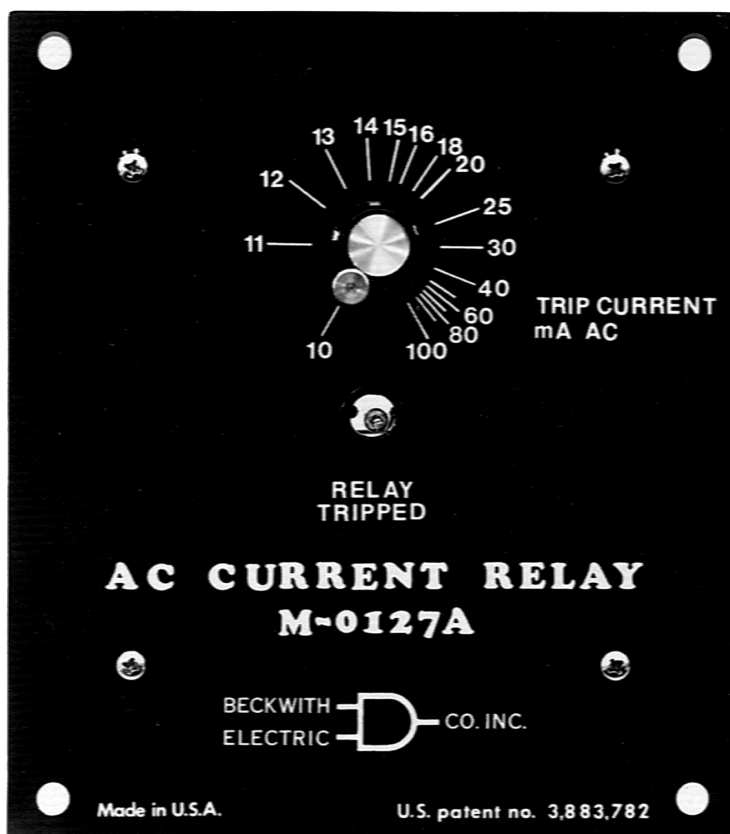
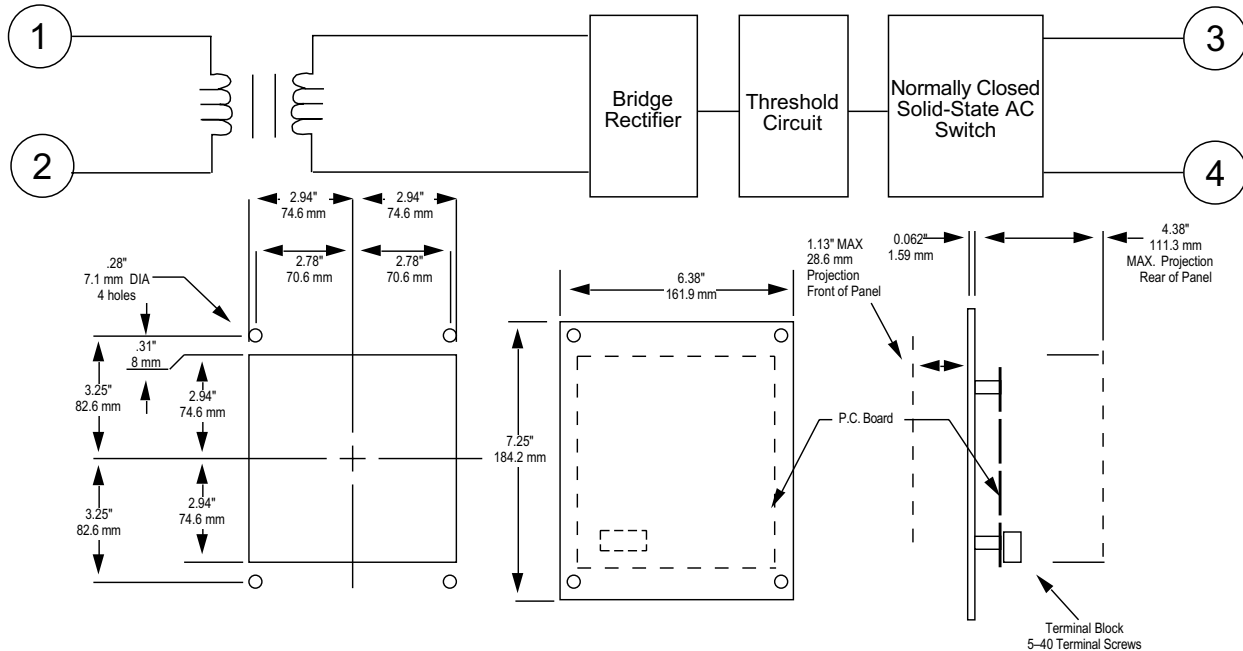


# AC Current Relay M-0127A/M-0170A



- M-0127A intended for use in 0.2 A circulating current circuit of paralleled LTC transformers to guard against damaging excessive circulating current
- M-0170A prevents damage to LTC transformer's switching mechanism under excessive loads
- Available in:
  - M-0127A: 0.01 to 0.1 Amps
  - M-0170A: 0.2 to 0.4 Amps
- Both relays can be used in other current and voltage-sensing applications



**CUTOUT DIMENSIONS**

**OUTLINE DIMENSIONS**

**INPUT**

- All solid-state design, transient protected.
- Two terminal input, transformer isolated from the output.
- Current setting adjusted with a calibrated dial.

M-0127A: 10 mA to 100 mA ac current range. 50/60 Hz, will withstand 2.5 A for one second.

M-0170A: 200 mA to 400 mA ac current range. Withstand 10 A for one second.

**INPUT BURDEN**

M-0127A: 100Ω to 500Ω dependent upon setting.

M-0170A: 2 Ω.

**OUTPUT**

Two terminal ac switch (triac), normally conducting. Opens on input current above threshold setting. Rated 1 A at 120 V ac. Transient and overload protected. Load must not be highly capacitive. Auxiliary relay can provide parallel alarm function. Open circuit impedance: 20 K.

**TEMPERATURE RANGE**

Unit will operate properly from -40° C to +85° C.

**PHYSICAL**

Size: 7-1/2" high x 6-6/16 wide x 4-3/8 deep (19.05 cm x 16.19 cm x 11.13 cm).

Approximate Weight: 1.4 lbs. (0.6 kg).

Approximate Shipping Weight: 3 lbs. (1.4 kg).

**PATENT**

U.S. Patent 3,883,782.

**WARRANTY**

The M-0127A/M-0170A is covered by a two-year warranty from date of shipment.



**BECKWITH ELECTRIC CO., INC.**

6190 – 118th Avenue North • Largo, Florida 33773-3724

PHONE (727) 544-2326 • FAX (727) 546-0121

E-MAIL [becomktg@psinet.com](mailto:becomktg@psinet.com)

WEBSITE <http://www.beckwithelectric.com>